



Lohmann & Rauscher

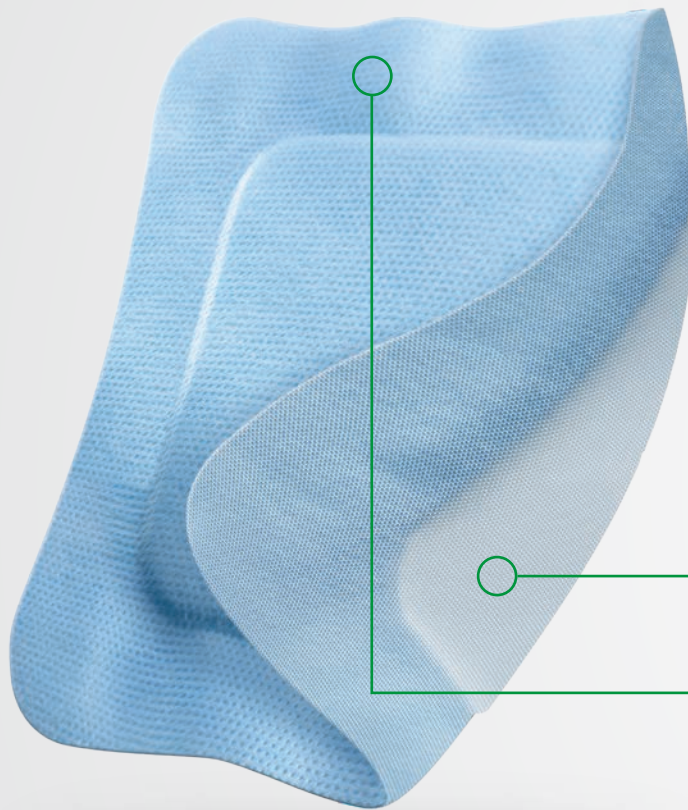
## Vliwasorb<sup>®</sup> Pro

Superabsorbent dressing  
for highly exuding wounds.



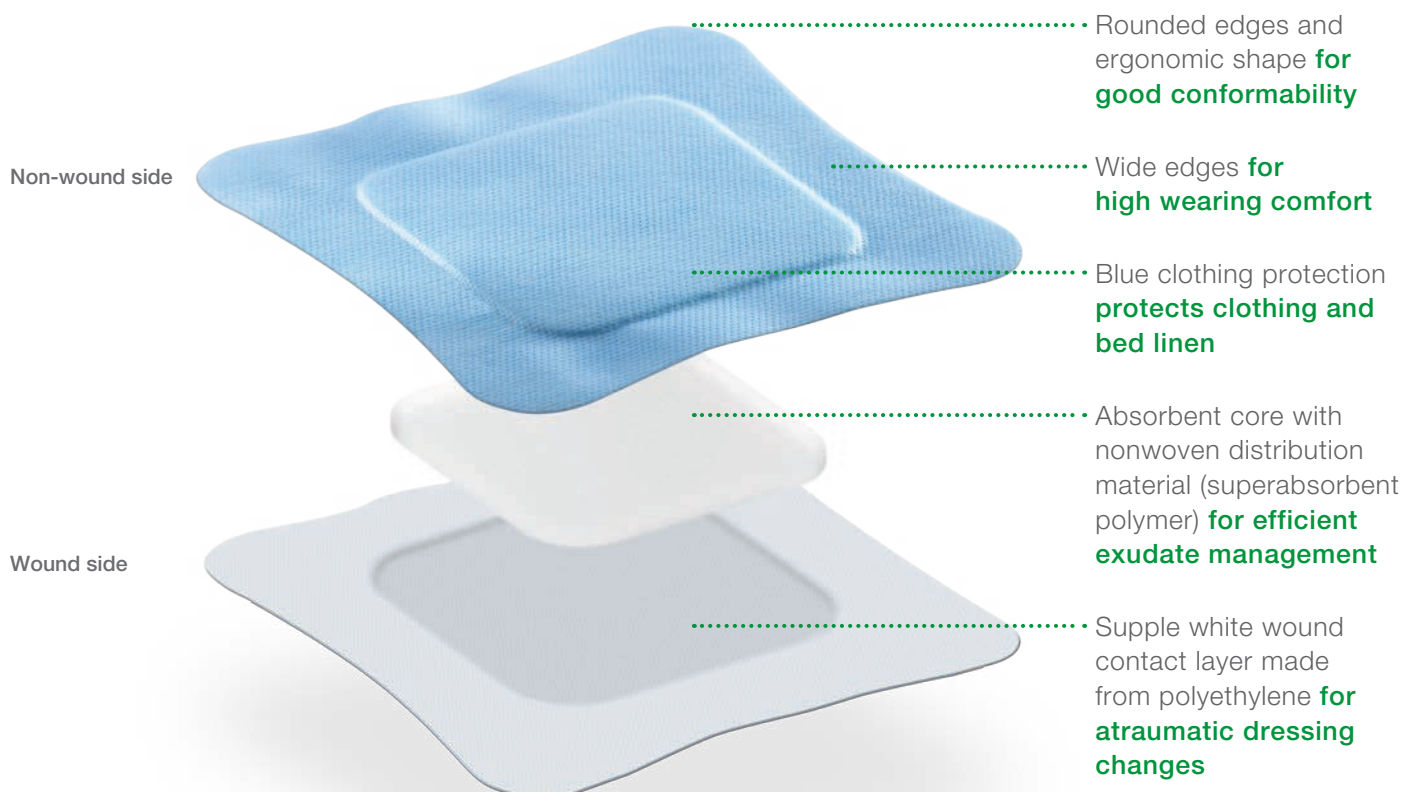
# Vliwasorb® Pro

The advantages at a glance.



Supple wound contact layer

Blue clothing protection layer



Non-wound side

Wound side

Rounded edges and ergonomic shape **for good conformability**

Wide edges **for high wearing comfort**

Blue clothing protection **protects clothing and bed linen**

Absorbent core with nonwoven distribution material (superabsorbent polymer) **for efficient exudate management**

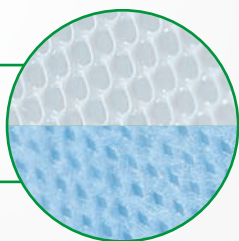
Supple white wound contact layer made from polyethylene **for atraumatic dressing changes**

## New superabsorbent polymer structure with very high absorption capacity



### Comfort and flexibility for the patient

- high conformability due to the ergonomic and flexible design<sup>4</sup>
  - ◆ easy and safe to use<sup>4</sup>

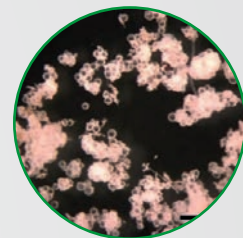


### Protection and safety for patients and users

- blue clothing protection and supple wound contact layer
  - ◆ atraumatic dressing changes<sup>1,2</sup>
  - ◆ protects the patient's clothing and bed linen<sup>2</sup>
  - ◆ patients can wear the dressing for longer<sup>1</sup>

### Efficient exudate management

- very high absorption capacity and high retention capacity
  - ◆ protection against maceration<sup>1</sup>
  - ◆ moist wound environment<sup>2</sup>
  - ◆ longer dressing change intervals save time and money<sup>3</sup>
- reduces proteases (e.g. MMPs, elastase)\*
- reduces odour development during the treatment<sup>1,2</sup>
- effective under compression - a combined approach can be taken to optimise healing potential



\* Based on in-vitro studies<sup>5</sup>

## What indications is Vliwasorb® Pro suitable for?



**Wounds with moderate to very high levels of exudate**



**Superficial wounds**



### Chronic wounds

e.g. lower leg ulcers, pressure ulcers, diabetic ulcers and oncological wounds



### Acute wounds

e.g. superficial second degree burns, postoperative wounds healing by secondary intention, traumatic wounds, skin graft donor sites

Vliwasorb® Pro can be used as a secondary dressing in combination with a suitable wound filler (e.g. Suprasorb® A, Suprasorb® Liquacel) to treat deep wounds. The dressing must be secured with a suitable secondary dressing (retention dressing, e.g. Curafix® H, elastic conforming bandage, e.g. Mollelast®/Mollelast® haft).

## Ordering information




### Vliwasorb® Pro

sterile, individually sealed

Size (cm)	Wound pad (cm)	REF	Shipping Unit (pcs.)
10 x 10	6 x 6	32 640	10/300
12.5 x 12.5	8.5 x 8.5	32 641	10/300
12.5 x 22.5	8.5 x 18.5	32 642	10/350
22 x 22	18 x 18	32 643	10/260
22 x 32	18 x 28	32 644	10/90

Please follow the instructions for use.

**Note:** Please check the size of the wound pad before placing your order.

-  Very high absorption and retention
-  Comfort and flexibility for the patient
-  Protection and safety for patients and users



## Sources:

- 1 de Lange S. User test report: a comfortable superabsorbent dressing for management of patients with moderate-to-highly exuding wounds. 2018b. (data on file) Results published: Georgiadis Efstathios, MD, Münter KC, MD, Eberlein Thomas, MD, Andriessen Anneke, de Lange Stefanie, Abel Martin, A Comfortable Superabsorbent Dressing for Management of Patients with Moderate-to-highly Exuding Wounds, E-Poster ID – Nr.: 227 WOUNDS UK Congress 13 – 15 November 2017, Harrogate, UK.
- 2 de Lange S. Clinical study report: case series using a polyacrylate superabsorbent dressing in the management of moderate-to-copious exuding wounds – study report 2018a (data on file). Results published: Wolber Silke, Scheuenstuhl Yvonne, de Lange Stefanie, Abel Martin, Case series demonstrating the performance and safety of a novel superabsorbing dressing\* in high exuding chronic wounds –first results, Journées Cicatrisation, Paris, 15-17 January 2017.
- 3 Seidler-Jankowsky R. Report FE-S - 0268/2015. 2015. (data on file)
- 4 de Lange S. Vliwasorb Pro acceptance test. 2015. (data on file)
- 5 Hipler UC. Study report: 17-070 - in vitro evaluation of the binding capacity of Vliwasorb® and Vliwasorb® Pro for the inflammatory proteases PMN elastase and MMP-2. 2017 (data on file)

For any queries please contact your local Lohmann & Rauscher (L&R)

Sales Representative or L&R Customer Service on:

**Australia: 1300 572 869**

**New Zealand: 0800 572 869**

Curafix®, Moll elast®, Suprasorb® and Vliwasorb® are registered trademarks of Lohmann & Rauscher GmbH & Co. KG. © 2018

Lohmann & Rauscher Pty Ltd · 321 Ferntree Gully Road · Mount Waverley, Victoria 3149 · Australia

Lohmann & Rauscher Limited · 21 Queen Street · Auckland 1010 · New Zealand

Supplied By: